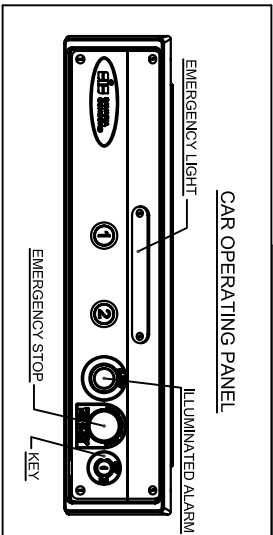
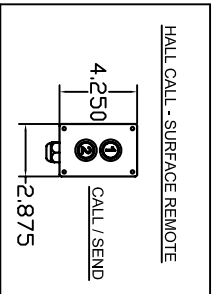
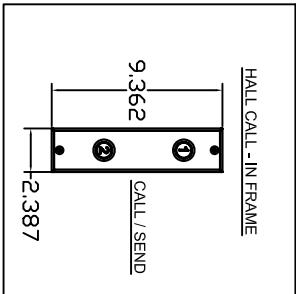
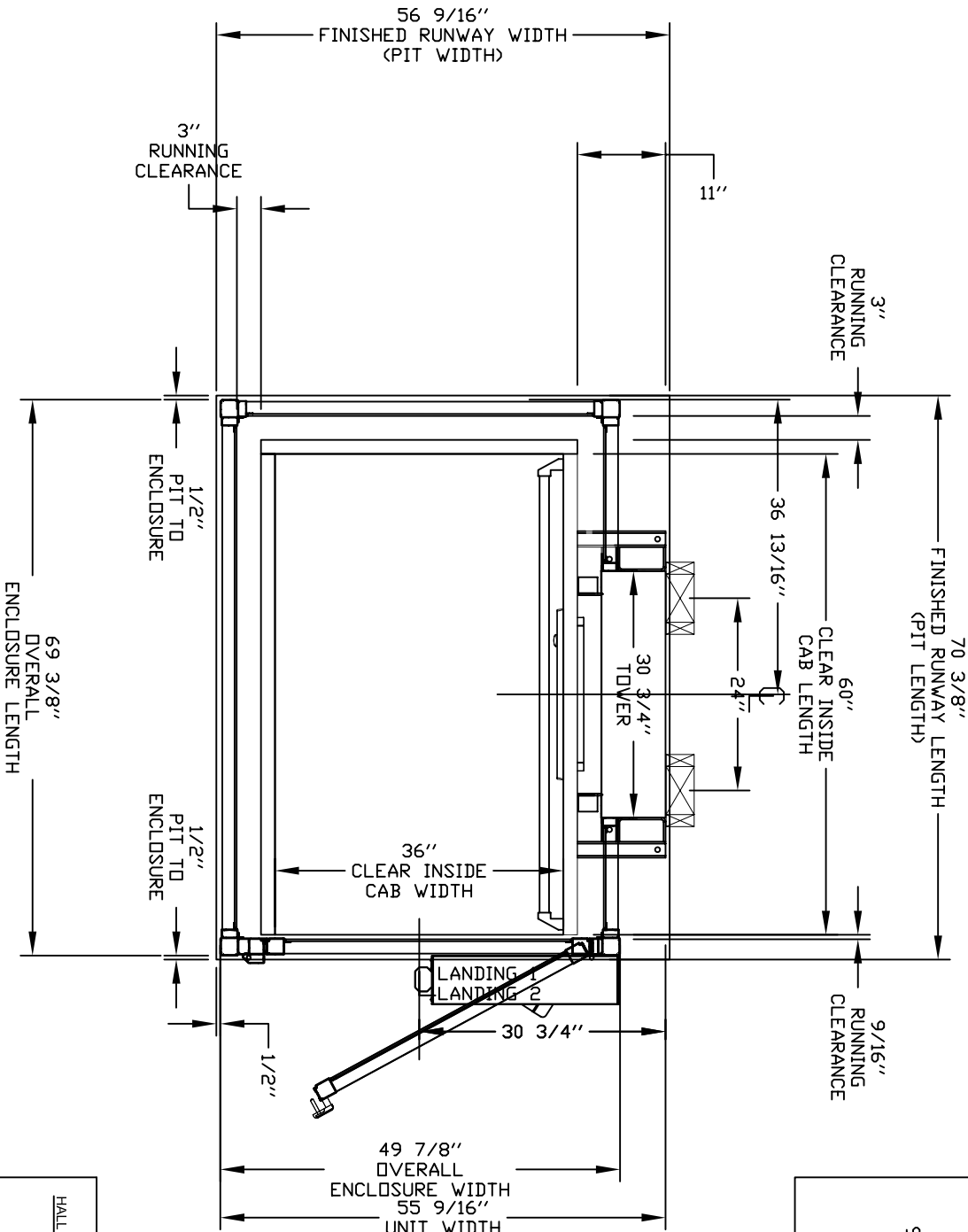
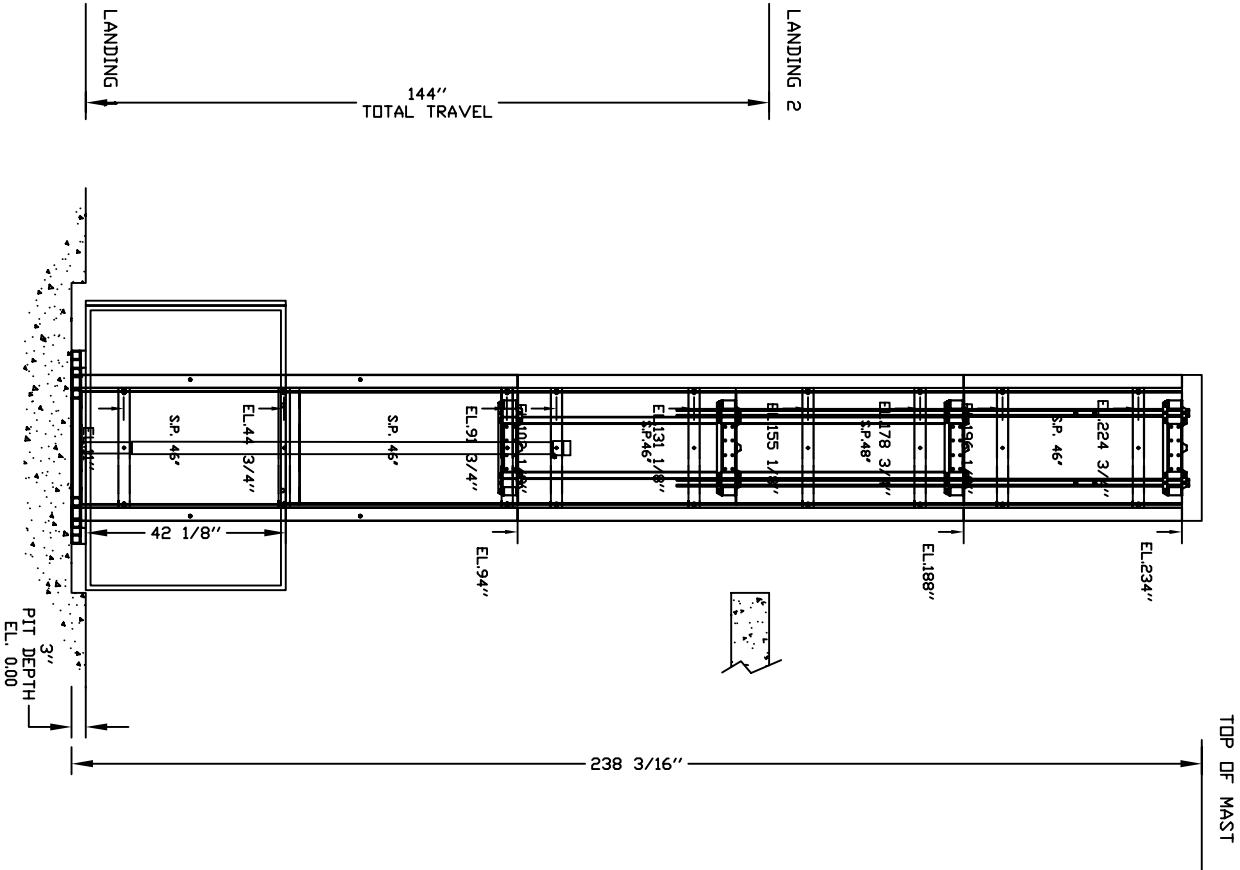


TYPICAL PLAN



PRELIMINARY DRAWING ONLY  
DRAWING APPROVAL:

THIS DRAWING REFLECTS OUR INTERPRETATION OF THE INFORMATION PROVIDED BY THE DEALER ON THE ORDER FORM. THIS INFORMATION IS THE DEALER'S RESPONSIBILITY, AND IS THE BASIS FROM WHICH THIS LIFT IS DESIGNED AND MANUFACTURED. PLEASE INDICATE THE REQUESTED ACTION BY CHECKING ONE OF THE FOLLOWING BOXES AND SIGNING BELOW TO AUTHORIZE COMPLETION OF THIS ORDER.

- ☐ APPROVED WITH NO EXCEPTIONS
- ☐ APPROVED WITH EXCEPTIONS, NO REAPPROVAL REQUIRED
- ☐ CHANGE AS NOTED, REAPPROVAL REQUIRED
- ☐ MAKE CHANGES AS NOTED, SEND CORRECTED DRAWING FOR REAPPROVAL BEFORE MANUFACTURE

- CHANGES REQUEST:
1. \_\_\_\_\_
  2. \_\_\_\_\_
  3. \_\_\_\_\_
  4. \_\_\_\_\_
- SIGNATURE: \_\_\_\_\_ DATE: \_\_\_\_\_
- CAUTION: ONCE THE DRAWING IS APPROVED, JOB CANCELLATION FEES WILL APPLY

OFFICE USE ONLY:	
CONFIGURATION VERSION STAMP:	0.0
MODULE VERSION STAMP:	15-143

Port No.	Variant No.
4	8571

Nationwide Lifts  
www.elevators.com

GENERAL ARRANGEMENT

CUSTOMER: NATIONWIDE LIFTS

PROJECT: APEX COMPLETE - 36 WIDE X 60 DEEP

ADDRESS: DOORS SAME SIDE, RAILS ON RIGHT

888-323-8755 INFO@ELEVATORS.COM

DATE:	06/16/15
REVISION DATE:	06/16/15
COMPLETED BY:	ANDREW HALL

JOB No.	SHEET No.
P000001	1 OF 4

PROVISIONS BY OTHERS

GENERAL

HOISTWAY – THE HOISTWAY MUST BE DESIGNED AND BUILT IN ACCORDANCE WITH ‘SAFETY STANDARD FOR PLATFORM LIFTS AND STAIRWAY CHAIRLIFTS’ OR ‘SAFETY CODE FOR ELEVATORS AND ESCALATORS’ AND ALL STATE AND LOCAL CODES.

PLUMB RUNWAY– DUE TO CLOSE RUNNING CLEARANCES OWNER/ AGENT MUST ENSURE THAT HOISTWAY AND PIT (WHERE PROVIDED) ARE LEVEL, PLUMB (-/+ 1/8” (3 mm)) AND SQUARE AND ARE IN ACCORDANCE WITH THE DIMENSIONS ON THESE DRAWINGS.

MINIMUM OVERHEAD CLEARANCE– OWNER/AGENT MUST ENSURE MINIMUM OVERHEAD CLEARANCE IS IN COMPLIANCE WITH CODES.

CONSTRUCTION SITE– OWNER/AGENT TO PROVIDE ALL MASONRY, CARPENTRY AND DRYWALL WORK AS REQUIRED AND SHALL PATCH AND MAKE GOOD (INCLUDING FINISH PAINTING) ALL AREAS WHERE WALLS/FLOORS MAY REQUIRE TO BE CUT, DRILLED OR ALTERED IN ANY WAY TO PERMIT THE PROPER INSTALLATION OF THE LIFT.

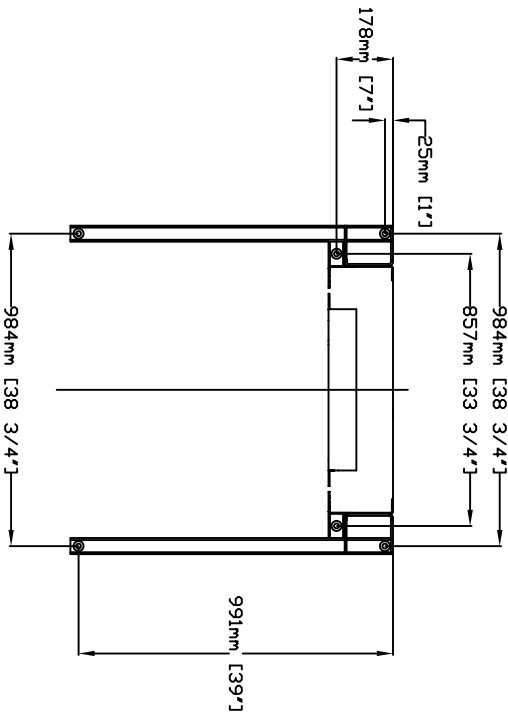
DIMENSIONS– CONTRACTOR/CUSTOMER TO VERIFY ALL DIMENSIONS AND REPORT ANY DISCREPANCIES TO OUR OFFICE IMMEDIATELY.

STRUCTURAL

FLOOR/SUPPORT WALL LOADS– CONTRACTOR TO ASSURE THAT BUILDING AND SHAFT WILL SAFELY SUPPORT ALL LOADS IMPOSED BY THE LIFT EQUIPMENT. REFER TO THE LOAD DIAGRAM ON THIS DRAWING.

MAST TO BE SECURELY FASTENED– WHERE REQUIRED THE MAST MUST BE SECURELY FASTENED TO THE STRUCTURAL SUPPORT WALL. REFER TO WALL / FLOOR SUPPORT LOAD DIAGRAM AND WALL LAG DIMENSIONS ON THIS DRAWING.

WHERE DOORS ARE REQUIRED– SUITABLE LINTELS MUST BE PROVIDED BY OWNER/AGENT. DOOR FRAMES ARE NOT DESIGNED TO SUPPORT OVERHEAD WALL LOADS.



ELECTRICAL

GENERAL– ELECTRICAL EQUIPMENT AND WIRING TO COMPLY WITH SECTION 38 OF CSA C22.1 (CANADA) OR SECTION 620 OF NEC ANSI/NFPA 70 (USA).

POWER SUPPLY– 120VAC, 20A, 60HZ, 1PH CIRCUIT THROUGH A FUSE DISCONNECT WITH AUXILIARY CONTACT ON MAIN POWER SUPPLY. PROVIDE TWO 18 AWG CONDUCTORS BETWEEN CONTACT AND CONTROLLER.

LIGHTING–LIGHTING OF 100 LX MIN. AT PLATFORM AND LANDINGS. LIGHTING WITH SWITCH AND ELECTRICAL GFCI OUTLET IN HOISTWAY PIT.

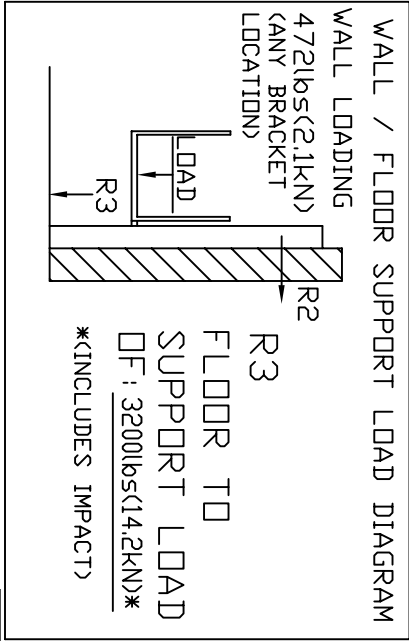
ENTRANCES

UPPER LANDING GATES– WHERE REQUIRED, SMOOTH SOLID BARRIERS ARE TO BE SUPPLIED AND INSTALLED ON BOTH SIDES OF ENTRANCE AT UPPER LEVEL AND MUST BE A MINIMUM OF 42” (1067 mm) HIGH. ENTRANCE ASSEMBLY MUST BE IN PLACE PRIOR TO THIS PROVISION.

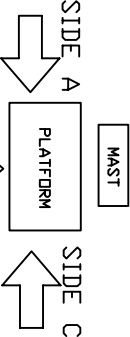
FASCIA PANEL BELOW UPPER LEVEL ENTRANCE– WHERE REQUIRED, FASCIA PANEL MUST BE FASTENED TO A SOLID WALL AND BE PERPENDICULAR TO THE FLOOR AND WALLS. HOISTWAY FASCIA IS NOT SELF-SUPPORTING FOR LONG, CONTINUOUS RUNS VOID OF ENTRANCES. ADEQUATE SUPPORT FOR THE FASCIA MUST BE PROVIDED.

ENTRANCE ASSEMBLIES– ENTRANCE ASSEMBLIES MUST BE ADJUSTED TO ALIGN WITH PLATFORM AND INTERLOCK EQUIPMENT.

OTHERS TO ALLOW AN ADEQUATE ROUGH OPENING.  
RETURN WALLS– RETURN WALLS AT ENTRANCES MUST BE BUILT-IN BY OTHERS AFTER ENTRANCE ASSEMBLIES ARE IN PLACE. ENTRANCE ASSEMBLY MUST BE SECURELY FASTENED TO WALLS.



SIDE B



ENTRANCE LOCATIONS

GENERAL

CLASSIFICATION:  
APPLIED CODE:  
SPECIAL NOTE:

MODEL:  
CAPACITY:  
SPEED:  
TRAVEL:

PIT DEPTH:  
PLATFORM SIZE:  
POWER SUPPLY:  
BATTERY BACK UP:

JACK UNIT

STROKE:  
PLUNGER O/D:  
CYL. O/D:  
CYL. I/D:

CONTROLLER

MODEL:  
TYPE:  
ETL #:  
CONTROL VOLTS:  
CONTROL AMPS:  
H.P.:  
AMPS:  
MFR.:

DOORS / GATES / CALL STATIONS

	LANDING 1	LANDING 2	LANDING 3	LANDING 4
DOOR TYPE	Enclosure 80" Door	Enclosure 80" Door		
DOOR SWING	C	C		
DOOR INSERT	1h	1h		
LOCK TYPE	Clear Plexiglass	Clear Plexiglass		
AUTO DOOR OPENER	WR500 Lock (24V)	WR500 Lock (24V)		
CUSTOM DOOR WIDTH	Commander Auto Opener	Commander Auto Opener		
CUSTOM DOOR HEIGHT				
IN FRAME CALL STN.				
CALL STN. TYPE	no	yes		
CALL STN. KEVED	Call/Send Buttons	Call/Send Buttons		
CALL STN. STOP BUTTUN	Not Required	Not Required		
CALL STN. MOUNTING	Surface Mounted Remote	Flush Mounted In Frame		
ISOLATED PRODDOR KIT	No	No		

OPTIONS PROVIDED

EMERGENCY PENDENT PLUG IN MANUAL LOWERING BOX

WINGS:  
TOUCH UP PAINT:  
BUILDING:  
LIGHT CURTAIN:  
PHONE OR PHONE PLUG:

RAMP:  
EXTRA KEYS:  
WALL FASTENERS:  
UNDERPAN SENSOR:

COLOUR:  
Standard Color - Almond Beige

POWER UNIT

MOTOR:  
FLOW:

3.0 HP, 120 VAC  
1.15 Gal/min (4.35L/min)

HYDRAULIC DATA

OIL TYPE:

GALLONS REQ'D:  
MAXIMUM WORKING PRESSURE:  
RELIEF PRESSURE:

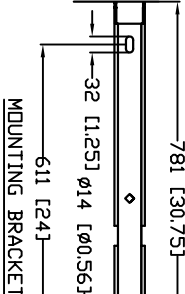
MAXIMUM RELIEF PRESSURE:  
HYDRAULIC HOSE:  
BURST:  
FITTINGS:

UNIVIS 32 INDOOR DEXRON ATF OUTDOOR  
1.5 Gal (5.68 L)  
2000 psi (137 MPa)  
WPx125% MAX.  
2000 psi (13.7 MPa)  
1/4" (6.4 mm) ID  
20000 psi (137.9 MPa)  
1/4" (6.4 mm) NPT MALE

SUSPENSION CHAIN

2X #50 ROLLER CHAIN  
BREAKING STRENGTH:  
SAFETY BRAKE:

7171 lbs (31.9 kN) each  
TYPE 'A'



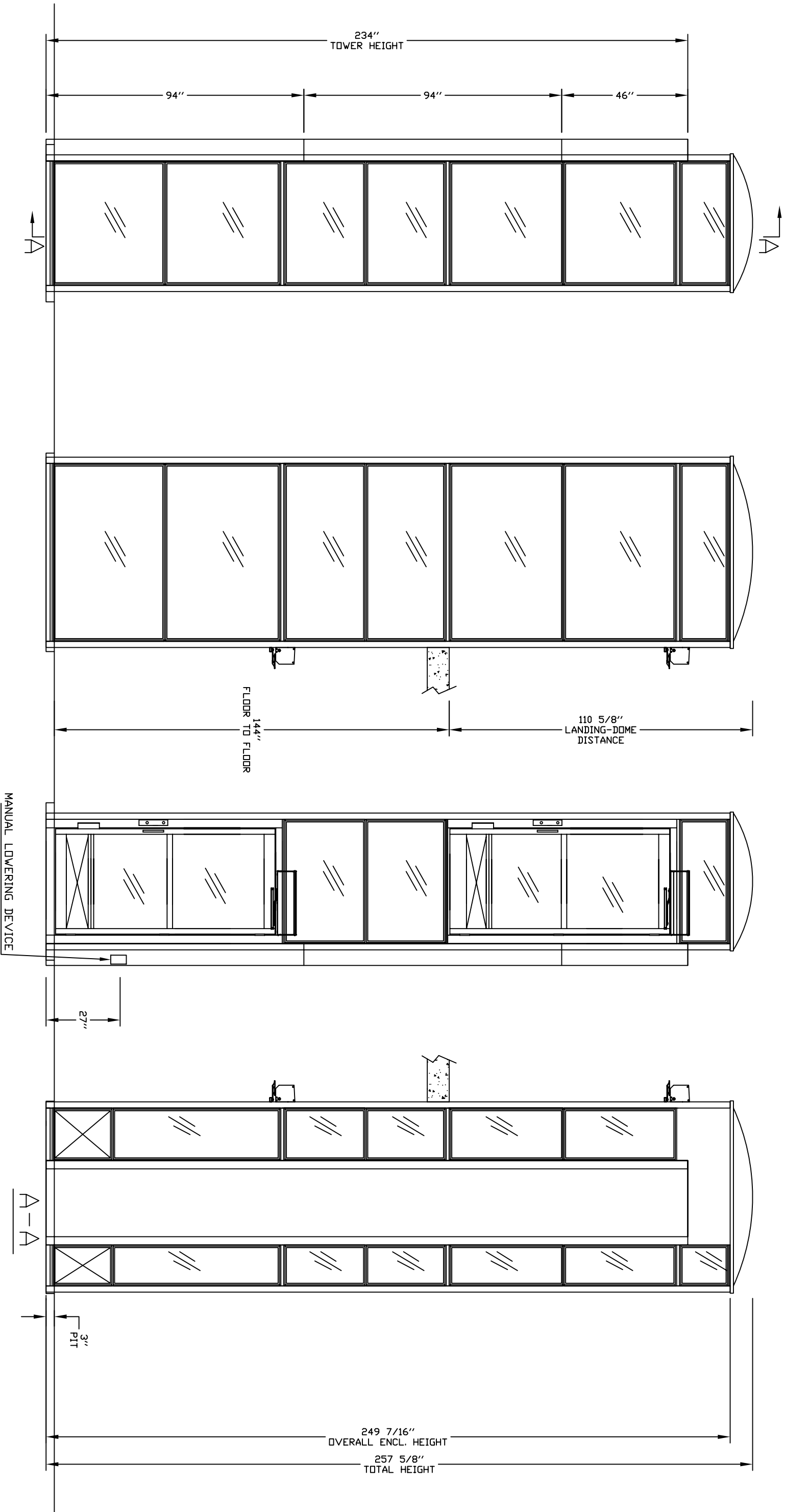
DATA SHEET

CUSTOMER:	DATE:	Port No.	Nationwide Lifts
PROJECT:	REVISION DATE:	Variant No.	48571
ADDRESS:	COMPLETED BY:		
ENCLOSED VERTICAL WHEELCHAIR PLATFORM LIFT			

SAVARIA

2 OF 4

PANEL DRAWING



INSERT Door and Gate  
STYLE: SHEET METAL

INSERT Enclosure  
STYLE: SHEET METAL

Clear Plexiglass

Clear Plexiglass

ELEVATION VIEWS  
ENCLOSED VERTICAL WHEELCHAIR PLATFORM LIFT

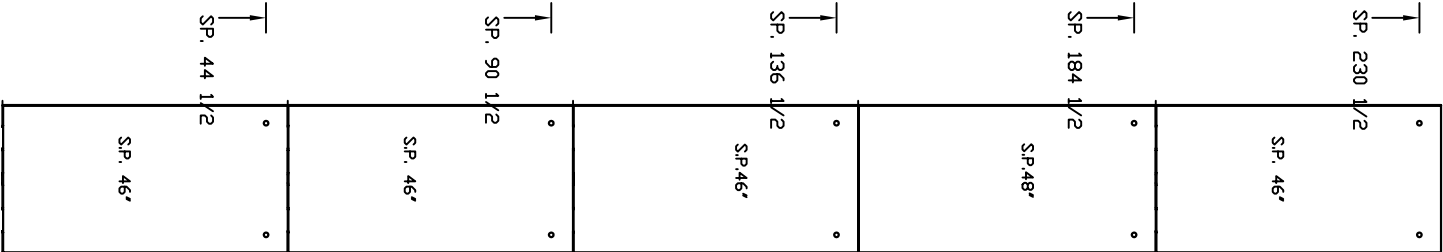
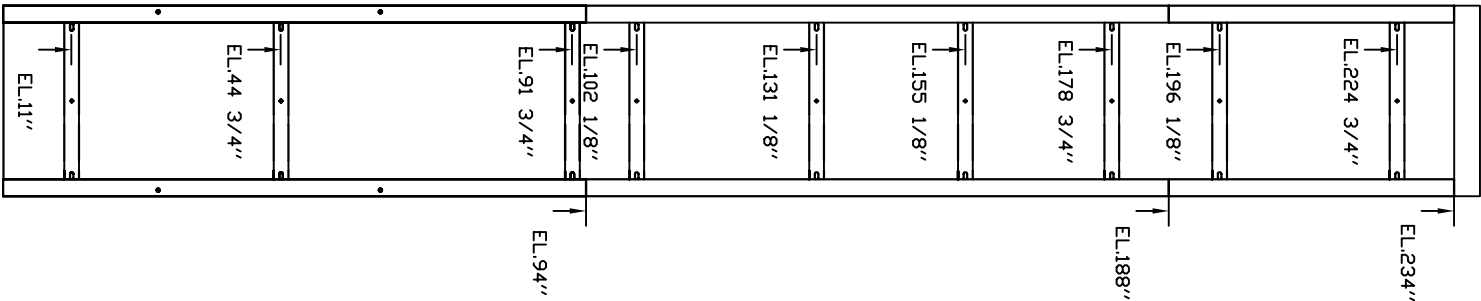
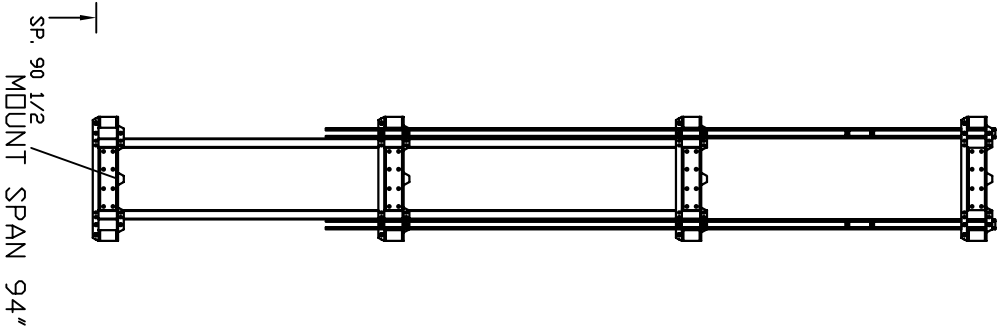
CUSTOMER: NATIONWIDE LIFTS  
PROJECT: APEX COMPLETE - 36 WIDE X 60 DEEP  
ADDRESS: DOORS SAME SIDE, RAILS ON RIGHT  
888-323-8755 INFO@ELEVATORS.COM

OFFICE USE ONLY:  
CONFIGURATION VERSION STAMP: 0.0  
MODULE VERSION STAMP: B37AD3

DATE: 06/16/15  
REASON DATE: 06/16/15  
COMPLETED BY: ANTHONY L. LUTTS

Port No. 48571  
www.nationwidelifts.com  
Variant No. 48571  
JOB No. P000000  
SHEET No. 3 OF 4





EL: MOUNTING BRACKET POSITION

SP: SERVICE PANEL

OFFICE USE ONLY:
CONFIGURATION VERSION STAMP: 0.0
MODULE VERSION STAMP: B37A13

CUSTOMER: NATIONWIDE LIFTS	DATE: 06/16/15
PROJECT: APEX COMPLETE - 36 WIDE X 60 DEEP	REASON DATE: 06/16/15
ADDRESS: DOORS SAME SIDE, RAILS ON RIGHT	COMPLETED BY: ANDREW LUTTS
888-323-8755 INFO@ELEVATORS.COM	

Port No.	
www.elevators.com	

Variant No. 48571



JOB No.	SHEET No.
P000000	4 OF 4